

## XIV. MERCHANDISE

The following is an introduction to principal new products :

### XIV.1. ELECTRIC FANS

Fuji Denki's Electric fans have been enjoying a good reputation because of their elegant design and high efficiency. However, when the thoroughly new and epoch-making products "Fuji Delta Fans" were completed at last in 1955, they made themselves a new standard in the manufacture of desk fans. Containing all the mechanism, which conventional types had in their stand in a limited space of the body enclosing the motor, this new design is what fan engineers have been trying to accomplish for a long period.

#### Features :

#### 1) Splendid Performance

To minimize the noise, it has employed a six pole condenser motor with an electric consumption of 25 W.

#### 2) Modern Style

The supporter is of a bent chrome-plated metal pipe matching well with the beautiful plastics blades.

This combination fully gives harmonized beauty in style.

#### 3) Logical Construction

One push-button is operated for switch-in and off, speed regulation and oscillation. Through an universal joint between the motor part and supporter, this desk fan can be easily changed to wall mounting.

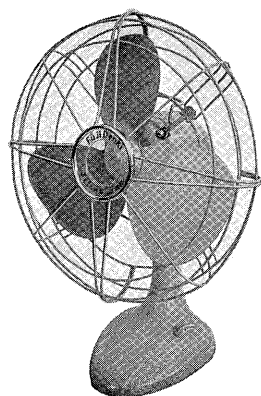


Fig. XIV.1.  
12" Desk Fan

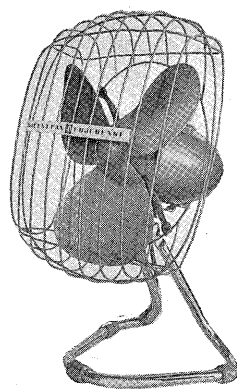


Fig. XIV.2.  
12" Delta Fan

### XIV.2. CENTRIFUGAL DEHYDRATING MACHINE

Dehydration of the laundry is indispensable work after the washing. The centrifugal dehydrating machine, though it is ideal has been very difficult to maintain stability because of the unbalance of laundry when the machine is in operation, and vibration results in so that the machine will never get popular.

Through a painstaking effect of its engineering staff, the Company has now overcome this obstacle.

The centrifugal cage is directly coupled with the motor the shaft, and strong centrifugal force works to dehydrate the laundry almost Completely. The cage and motor are supported by excellent buffer device and the start and stop of the operation is controlled by a lever provided on the side of the case ; if the laundry is put into the bucket, and the cage is covered with a transparent lid, placing the lever to the marking of "on" starts the centrifugal dehydratein and in 3 minutes it finishes the work. At the hinging point of the lid there is a special protective device to prevent the operation of the machine carelessly when the lever is set to the position of "on" with the led open.



Fig. XIV.3.  
Centrifugal Dehydrating Machine

### XIV.3. ELECTRIC WASHERS

The flush-water system employing double pulsators has been predominating in the market with an increasing production ever since its appearance and the reciprocating agitator system which had been popular until the advent of the former is now declining.

The reasons for such popularizing are: Their reasonable price because of simpler construction and speedy and efficient washing please the modern people. Being provided with a wide roller winger, a time switch and overflow device, they offer every convenience of the double pulsator type.

#### Features :

#### 1) The Washing Machine has Two Sets of Rotating Blades.—Pulsator.

These pulsators, are fitted facing each other but their shafts centers are not in a line, which will cause a strong and intricate whirl and give laundry the penetration of a gush of soapands through the texture most effectively, yet preventing the cloths from twisting and adhering to a side of the tub and resulting in even wash and no damage.

#### 2) A Large Sized Wringer Roller is Provided.

It is easily detachable from the main body of the washer. It wrings loundry with ease and no need of folding stuff of large width. Buttons on features will never be damaged in wringing.

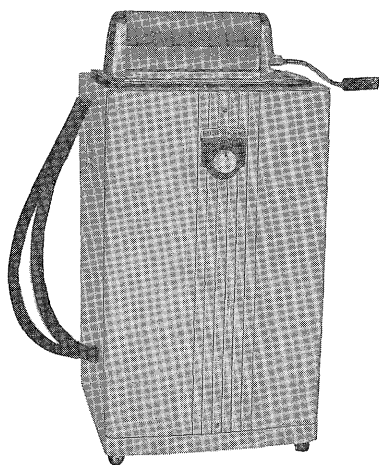


Fig. XIV.4. Electric Washer

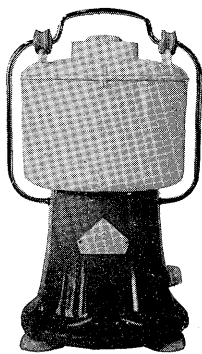


Fig. XIV.5. Juicer

### XIV.4. JUICERS

With the Juicer homeswires will be able to obtain off-hand fresh and natural fruit juice. Composed of a cutter and a centrifugal separator the juicer first crushes fruits with the blades of motor-driven cutter and thereafter through the centrifugal force juice is supplied into a glass automatically. It is feasible to obtain for one time one liter of juice by throwing in material continuously.

### XIV.5. ELECTRIC AIR FILTERS AND SMALL SIZED DUST COLLECTORS

Fuji Denki's air filter is an application of dust collecting function of static electricity and minimizing the generation of harmful ozone and peroxide of nitrogen which is generated at a corona discharge. This type LF-12 treat air volume of  $30 \text{ m}^3/\text{min}$ , catching the dust up to  $0.1 \mu$  size.

This type of filters are in large demand at hospitals, pharmacies, precise machine works.

This electric air filter is not suitable for very dusty places. In this case the small-sized dust collector is to be applicable. The principle is the same with that of Cottrel precipitator and the machine is placed in a small cabinet. The Type SA-12 handle the volume of  $30 \text{ m}^3/\text{m}$ , dust collecting rate is more them 96%, mainly being used at factories where powder is the main product, and also at pigment factory, can manufacturing factory and grinding room.

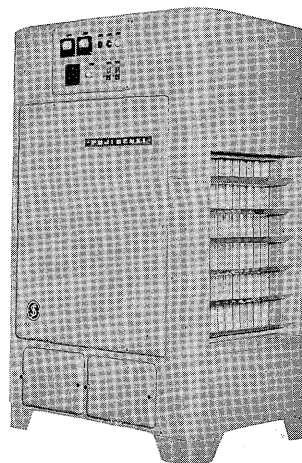


Fig. XIV.6. Dust Collector