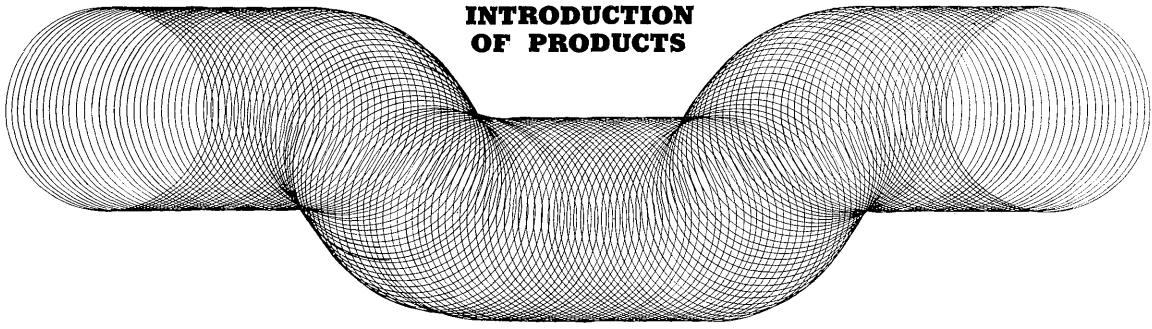


INTRODUCTION OF PRODUCTS



FUJI SINGLE PHASE AC INTEGRATING WATT-HOUR METER, MODEL E-24

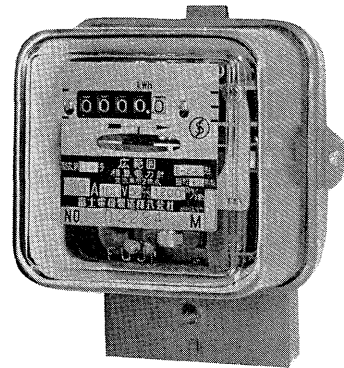
For a single phase ac integrating watt-hour meter, double-rating based on JIS C 1210. 1211-1955 has been used in Japan.

However, as the home electrification has advanced in the present day, the demand for the extension of the watt-hour metering range from the present double-rating to triple-rating has increased in order to simplify the meter exchanging operation and the parts stocking. To satisfy such demand the new Japanese Industrial Standards JIS C 1210. 1211-1965 of the single phase ac integrating watt-hour meter has been established.

Introduced here is the Model E-24 which has been developed through many years of research by our company in strict adherence to the New Japanese Industrial Standards.

1. Features

- 1) The measurement is accurate because of the minimal meter error caused by the variation (indicated current 1/1 to 1/60) due to the wide range of load.
- 2) In order to keep the friction of register at a minimum, an aluminum alloy plate has been used for the wheel. Also, to ensure longer usage, the improvements have been made to decrease the mechanical friction of the rotating conductors.
- 3) A double jewel bearing has been incorporated in its lower bearing to ensure longer life.
- 4) A temperature compensator has been incorporated initially in the damping magnet and secondary, in the voltage elements in order to improve its temperature characteristics and reduce its self-heating effect.
- 5) The temperature rise of the current coil and the terminals has been kept to a minimum, thereby reducing its deterioration from the effect of heat. The increase of the heat effect due to overloading has been checked by the use of highly heat-resistant



material for current coil bobbin and Class E insulation for the coil.

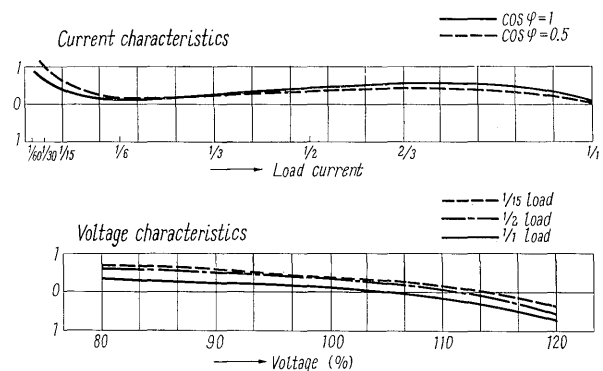
6) For ease of repair and adjustment, the clearance of the gap in the damping magnet has been widened.

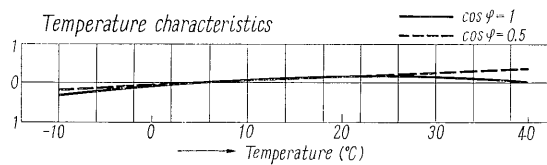
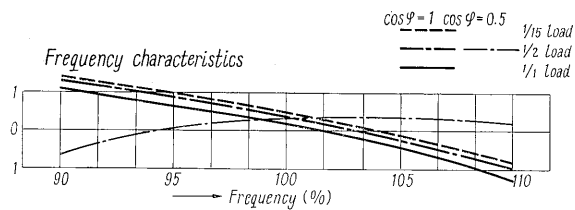
7) It has been designed so that the connecting piece for test can be slid sideways when experimenting and can be secured readily after its use.

2. Standard Ratings

- 1) Rated voltage...100 v & 200 v
 - 2) Rated frequency...50 cps & 60 cps
 - 3) Rated current...30 amp, 60 amp, 120 amp
- Can be manufactured with ratings other than those mentioned above.

3. Characteristic Curves

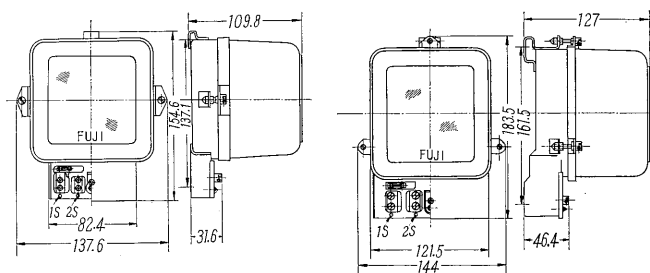




4. Dimensions

Below 30 amp

Above 60 amp



5. Miscellaneous

Upon request, it is possible to install the extended terminal cover and reverse turning prevention device as specified.