

Specifications and Performance

Repeating accuracy : Within ± 0.1 sec
Restoration time : Within 10% of set time limit
Operation voltage : Operation in the range of 85 to 110% of the rated voltage
Power consumption : Approx. 4.5 w (6.5 va)
Frequency
of operations : 1800 operations per hour
Electrical life span : } More than 500,000 times
Mechanical life span : }



CSA-APPROVED COOLANT OIL PUMPS

Existing at present for the Fuji Electric CSA-approved coolant oil pumps are Models aWOP-7A and aDWP-7A (output of both models being 125w) which are now widely used with satisfactory results. Introduced below, however, are four additional pump types. Models WOP-7B and DWP-7B (output 150w) models WOP-8D and DWP-8D (output 250 w) which have been approved according to the CSA requirements, dated Aug. 16, 1966.

These oil pumps have been manufactured for many years, based on Fuji Electric's rich experience and superior techniques. They are extensively used in business circles for the circulation of oil and water of machinery, with satisfactory results. Since these types recently approved by the CSA have outputs from 150 w to 250 w, the customer can select from a wide range of types with respect to oil delivery rate and head. It is expected that these types will be exported in large quantities to America and Canada for their machinery.

Features

1) External appearance fully harmonized with newly designed machinery.

The pumps have been made modern in design in order to fully harmonize with the ever-progressing machinery. Its smart appearance never detracts from but enhances the appearance of the machinery with which it is used.

2) Totally enclosed type minimizing trouble occurrence

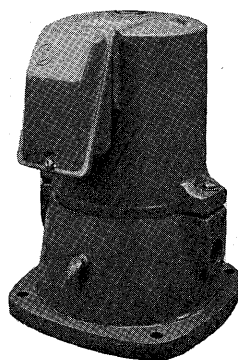
Since the motor and the pump chamber are both compactly accommodated, and both totally enclosed in construction, there need be no concern over penetration of liquid and dust into the equipment.

3) Mechanical seal is used for bearing system

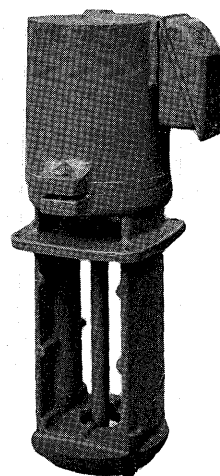
For the air tightness of the pump chamber, mechanical seal is used to provide much longer life span than the oil seal and gland packing regarding

Use

For star delta motor starting, such machinery as press machines, injection moulding machines, high frequency baking devices, program control, communication equipment, automatic cleaners, automatic mixers, auxiliary circuit for time control, etc.



Self-priming type



Immersion type

possible mechanical loss and wear.

4) Quiet operation for high efficiency

Since an impeller of high efficiency, fully balanced with a high-quality precision-made common shaft, is used for the rotating shaft, vibration and noise are minimized for highly efficient operation.

5) Transparent cap permitting observation of rotating direction at a glance.

A transparent screw cap is used for the motor head portion, permitting easy observation and confirmation of the rotating direction.

6) Operation available at optimum condition

There are self-priming and immersion types, with outputs widely ranging to a maximum of 250 w, so that the optimum type of equipment can be selected for any purpose.

7) Convenient terminal portion

(1) A 9-terminal type can be manufactured, selectable 220 and 440v, fully meeting the power voltage requirements of America and Canada. For the lead-out wire, the insulated cable used has been approved according to CSA requirements.

(2) The terminal box is constructed to permit free change of facing direction over 90 degrees to either the left or right, so that it may be installed inside compact machinery for convenience.

Specifications

CSA File No. LR 21185-2

System		Self-priming type		Immersion type	
Model		WOP-7B	WOP-8D	DWP-7B	DWP-8D
Pump	Delivery rate	45/65 l/min	90/120 l/min	60/80 l/min	100/140 l/min
	Delivery head	3 m	4 m	3 m	4 m
	Limit viscosity of used liquid	1400/500 Redwood sec		2000/1000 Redwood sec	
	Standard pipe diameter	PS $\frac{1}{2}$	PS $\frac{3}{4}$	PS $\frac{1}{2}$	PS $\frac{3}{4}$
Motor	Rated voltage	3-phase, less than 600 v		3-phase, less than 600 v	
	Frequency	50/60 cps		50/60 cps	
	Rated output	150 W	250 W	150 w	250 w
	Insulation	Class A		Class A	
	Rating	Continuous		Continuous	
Weight of Product		11 kg	13 kg	11.5 kg	17 kg

Remarks: The cases of 50 and 60 cps are separated by the / marks.