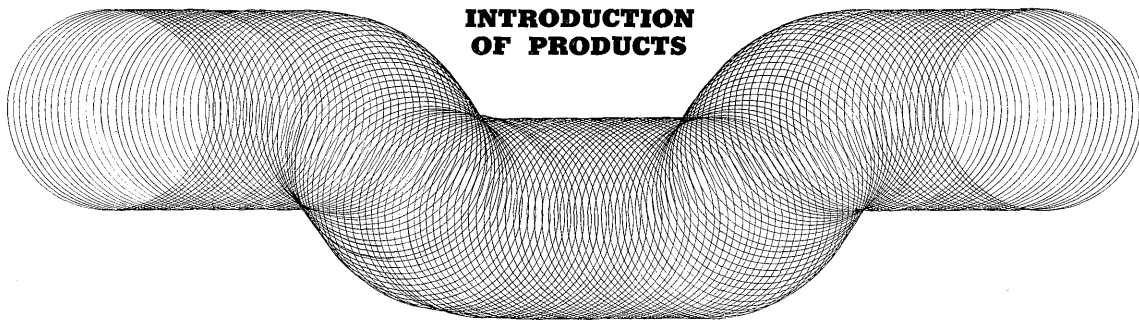


INTRODUCTION OF PRODUCTS



HIGH TENSION MAGNETIC CONTACTOR

Preface

We, Fuji Electric Co., Ltd., have been manufacturing a number of Model KF 926 high tension magnetic contactors which are suitable for frequent starting and stopping of high tension motors, and for these we have received a good reputation. Recently, there has been a tendency toward increased demand for this contactor due to the fact that it is used for a switch to make or brake the primary circuit of a distribution transformer as well as a switch to drive a high tension motor.

At present we have developed and started to mass produce a new type of contactor characterized by its small size and long life. In this new magnetic contactor, we have renewed the construction of the old type, are mass producing it and the result is a highly efficient product. Much care and good ideas were put into

the material used, the construction and the form of the arc-extinguish chamber.

Features

- 1) Long life
- 2) Small size ; small mounting space, convenient for handling because it is a drawn out type structure.
- 3) Unique construction accomplished by utilizing injection type epoxide resin mould to each part.
- 4) Small space for mounting on switch board because electric arc spouts only above direction.
- 5) Since the arc-extinguish chamber is compactly moulded with special resin, easy replacement and maintenance is assured.

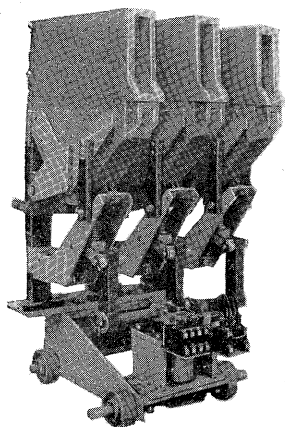


Fig. 1 External view

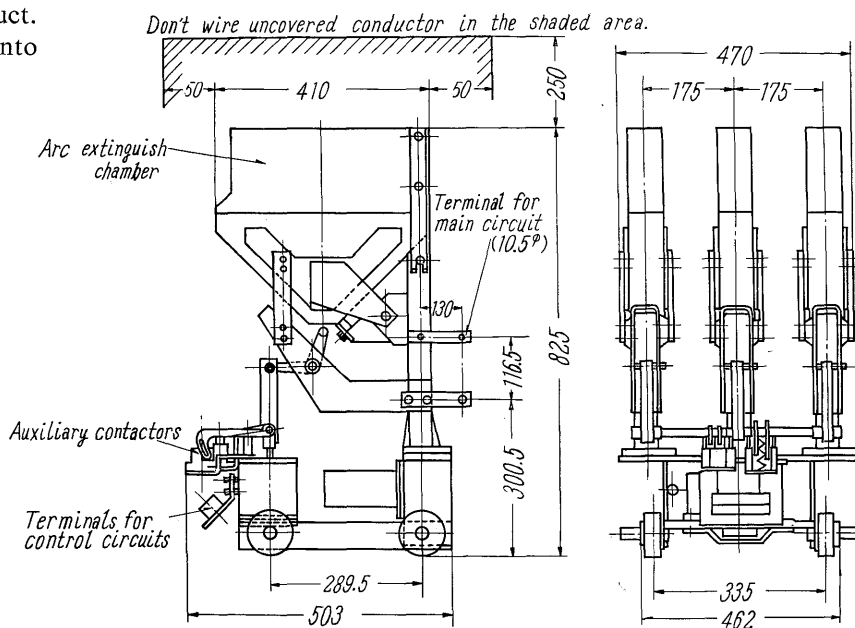


Fig. 2 Dimensions

6) This contactor has excellent breaking capacity since the arrangement of the arc-quenching board and the form of the arc-extinguish iron sheet are most suitable as proven by many breaking tests.
 7) There is no noise induced by the control magnet and apparent power consumption is small.

Rating and Performance

- 1) Rated voltage (Main circuit): 3300 v
50/60 c/s
- 2) Rated current (Main circuit): 200 amp
- 3) Rated breaking capacity: 25 Mva
Operating duty: 0~2 min-CO
- 4) Short time current: 4400 amp 0.5 sec

- 5) Switching capacity: Class A
- 6) Mechanical life: 5 million times
Electrical life: 0.5 million times
Switching frequency: 300-times/hour
- 7) Maximum capacity of
fitting motor: 750 kw(1000 hp)
Maximum capacity of
fitting transformer: 3-phase 1000 kva
- 8) Controlling circuit: 200/220 v
50/60 c/s

The standard controlling method is a continuous exciting system but it is possible to manufacture a locking system which is excited on only making or breaking operations in accordance with requirements.

(By K. Taketani, Fukiage Factory)

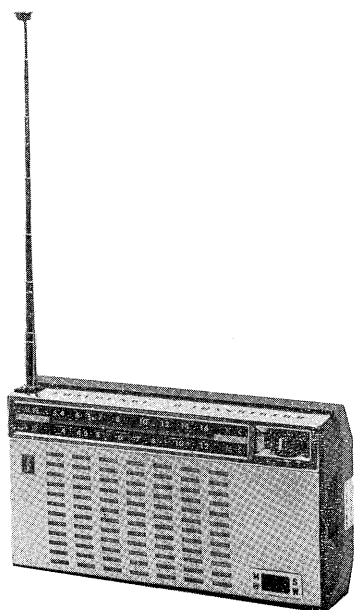
FUJI 8-TRANSISTOR MW/SW 2-BAND RADIO, MODEL TRS 864

More interest in multi-band radios is the world trend these days, and instead of 6-transistor portables, 8-transistor AM-SW radios are going to be popular. The Fuji model TRS 864, a two-band portable with 8 transistors and 1 diode is the answer for those who want the best multi-band (AM/SW) radio without spending the most.

Features

- 1) Ultra-high sensitivity

Drift transistors...each of which does the work of two transistors...are combined with diode so that stabilized, highly sensitive reception is possible wherever one may be.



- 2) Compact and light weight

Weighing less than a pound, it is more portable than most 2-band radios.

- 3) Fine tuning mechanism

The fine tuning mechanism is a magnifier which enlarges signals sixty times to simplify the short wave control. After tuning to your favorite station, turn this dial to the right or left for finding the strongest and clearest broadcast reception. The fine tuning system easily brings in even the weakest stations. This is especially noticeable in SW reception.

- 4) Gear operated slide-rule dial

The geared dial mechanism results in smooth, accurate tuning...no slipping. Contrasting black and white slide-rule dial is easy to read for MW and SW bands.

- 5) Two antennas

One is a large ferrite core antenna which spans the entire width of the cabinet. The other is an extension rod antenna which helps bring in even distant stations, especially for short wave broadcasts, by pulling out to the fullest extent.

- 6) Tone control

The tone control switches from bass to treble for the listener's pleasure. For high, clear tone push the switch upward as indicated by "H", and for low tone, turn it downward as indicated by "L".

- 7) Attractive metallic front and handsome side-cut design.

- 8) Four low-cost penlight batteries provide extremely long battery life and can be purchased anywhere.

- 9) Two earphone jacks...two persons can listen at the same time.

Specifications

Circuit: 8-transistor superheterodyne
 Frequency range: MW 540~1600 kc